









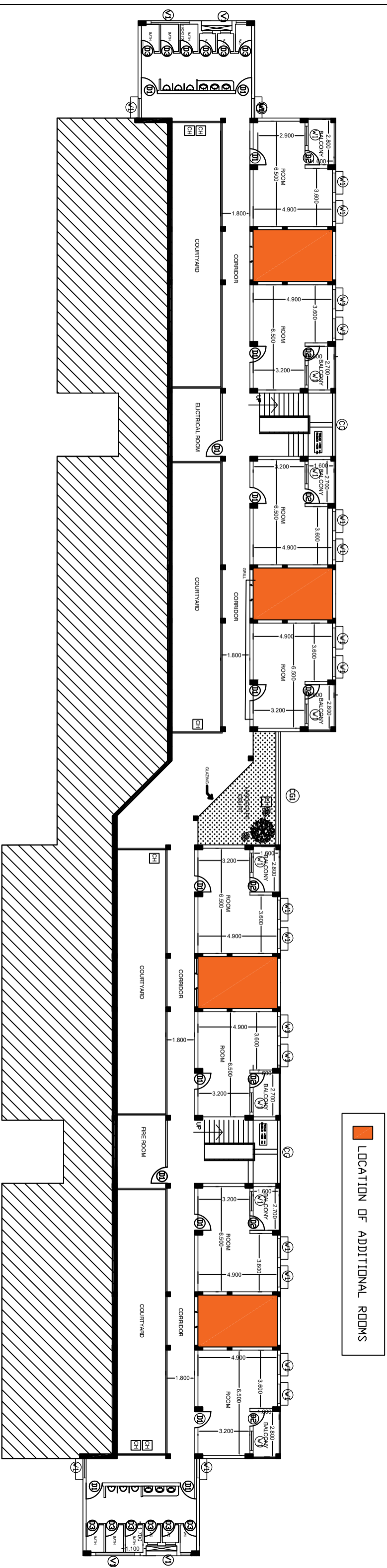


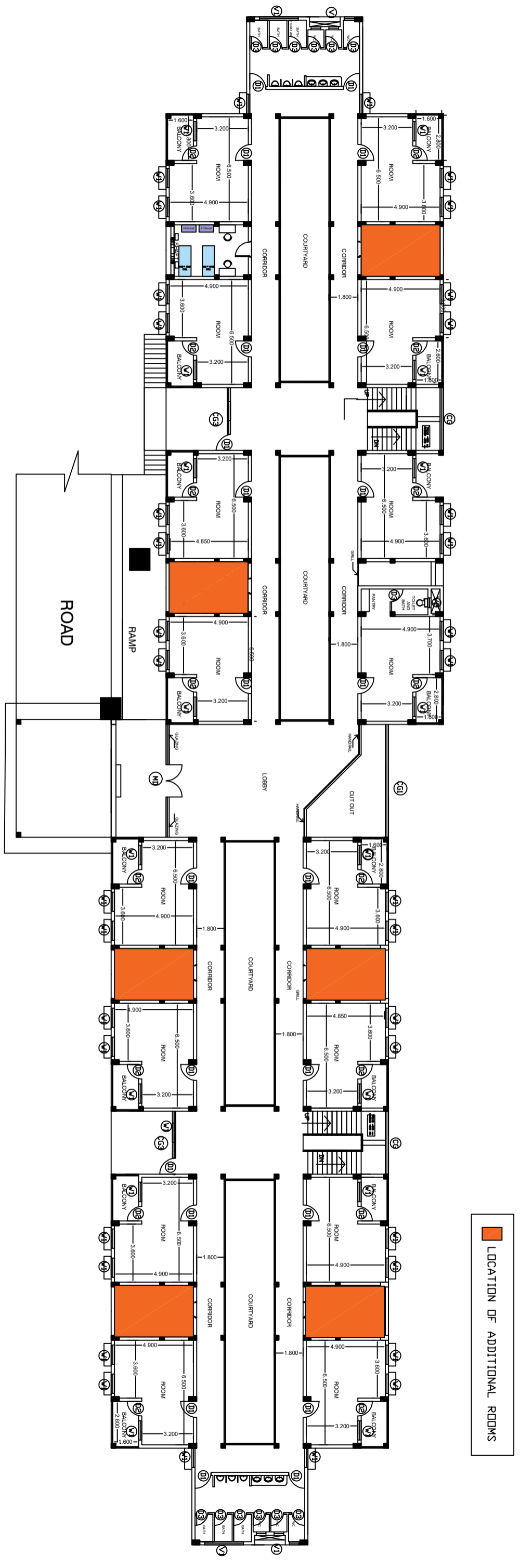
LEGEND: -

| LEGEND | DESCRIPTION |
|---|-----------------------------|
|  | 1200mm sweep Ceiling fan |
|  | 2000lm 4ft LED Light |
|  | Bracket light with LED Lamp |
|  | Computer point(3X5A Socket) |
|  | 1 no RJ45 Port |
|  | Calling bell switch |
|  | Calling bell |
|  | Switch board |
|  | 25mm PVC Conduit |
|  | 20mm PVC Conduit |

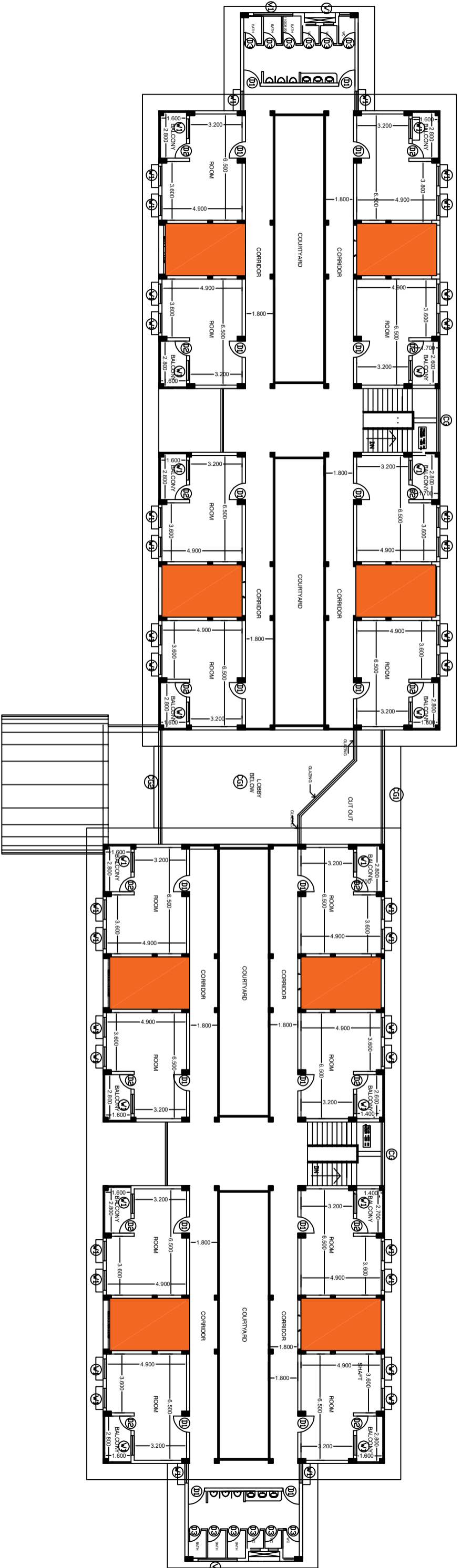
TYPICAL PLAN FOR ADDITIONAL ROOMS-19 ROOMS

AS BUILT ARCHITECTURAL DRAWING OF MSH BLOCK GF





AS BUILT ARCHITECTURAL DRAWING OF MSH BLOCK FF




 LOCATION OF ADDITIONAL ROOMS

AS BUILT ARCHITECTURAL DRAWING OF MSH BLOCK SF